



ANARK NX ADAPTER

CONTENTS

Supported features within the Anark NX Adapter	2
Supported features within the Anark JT Adapter	3
Security	4
Anark Workstation Instructions	5
Anark Publish Instructions	6

SUPPORTED FEATURES WITHIN THE ANARK NX ADAPTER

Anark Advanced MBD CAD Adapter Feature Support for NX Files			
Last Date Validated:	9/26/2024		
File Types Supported:	.prt		
Multi-CAD Supported Features			
Category	Feature Name	Supported	Notes
Product Geometry	Part Geometry	YES	
Product Geometry	Part Bodies	YES	
CAD Entity Color	Part Body Color (color per body)	YES	
CAD Entity Color	Part color	YES	
CAD Entity Color	Part Face color	YES	
CAD Entity Color	Assembly Occurrence face color (set at assembly level)	NO	
CAD Entity Color	Assembly Occurrence part color (set at assembly level)	PARTIAL	- NX Specific: Assembly occurrence part color partially supported when using "Synchronize Subassembly Properties -> Display"
CAD Entity Color	Component Transparency/Opacity	NO	
CAD Entity Color	GDT Color	YES	
CAD Entity Color	Supplemental Geometry Color	PARTIAL	ANARK DOESN'T IMPORT DATUM PLANE COLOR
Product Metadata	Product Attributes (Custom Parameters, File Properties, etc)	YES	
Product Metadata	Semantic Attributes for GD&T	YES	
Supplemental Geometry	Datum Planes	YES	
Supplemental Geometry	Fixed Size Datum Planes	YES	
Supplemental Geometry	Axis Systems	YES	
Supplemental Geometry	Fixed Size Axis Systems	YES	
Supplemental Geometry	Dashed lines: axes, witness lines, etc	PARTIAL	
Supplemental Geometry	Supp Geometry Surfaces	YES	
GD&T	Flat to screen notes	YES	
GD&T	Graphical GD&T (3D dimensions, tolerances, notes, tables, weld symbols, etc)	YES	
GD&T	GD&T->Part Associations	YES	
GD&T	GD&T->Occurrence Associations	YES	
GD&T	GD&T->Face Associations	YES	
GD&T	GD&T->Occurrence Face Associations	YES	
GD&T	GD&T->FEATURE CONTROL FRAMEGTOL Datum Reference Associations	YES	Implicit associations; user not required to define in CAD
GD&T	GD&T->Datum Associations	YES	
GD&T	GD&T->Supp Geometry Associations	YES	
GD&T	GD&T->Edge Associations	YES	
Views	Views	YES	
Views	Entity visibility; ability to hide/show various entities in a view or capture	YES	
Views	View Placement (ie. Exploded)	YES	
Views	Views with Folded and Flat Patterns (Supporting Sheet Metal)	NO	
Views	Views with Complex Sections	YES	
Views	View-Specific Bodies	YES	
Cross Sections	Cross Sections: Single Plane	YES	
Cross Sections	Cross Sections: 2 Plane (NX + JT Only)	YES	
Cross Sections	Cross Sections: Box (NX + JT Only)	YES	
Cross Sections	Cross Sections: Selective Sections	NO	
NX/JT Specific Supported Features			
NX	Apply Reference Sets to All Assembly Levels	YES	
NX	Import Scope, Tables and Legacy PMI	YES	
NX	Import Scope, Layers	YES	
NX	Import Scope, Reference Sets	YES	
NX	Import Scope, Section Views	NO	
NX	Merge Bodies	YES	
NX	Cross Section Specifics	YES	
Import / Output and Other Options			
Anark Collaborate	Importable to Anark Collaborate without Desktop publishing	NO	
Output Option	GD&T Show On Top	NO	
Import Options	Level Of Detail Settings	YES	
Import Options	Import Scope, GD&T	NO	
Import Options	Import Scope, Supplemental Geometry	YES	
Import Options	Import Scope, Attributes	YES	
Import Options	Import only Entities Shown in Views	YES	
Import Options	Ignore "Suppressed" Entities	NO	
Import Options	Combine Disjoint Bodies	YES	



SUPPORTED FEATURES WITHIN THE ANARK JT ADAPTER

Anark Advanced MBD CAD Adapter Feature Support for JT Files			
Last Date Validated:	9/26/2024		
File Types Supported:	.jt		
Multi-CAD Supported Features			
Category	Feature Name	Supported	Notes
Product Geometry	Part Geometry	YES	
Product Geometry	Part Bodies	YES	
CAD Entity Color	Part Body Color (color per body)	YES	
CAD Entity Color	Part color	YES	
CAD Entity Color	Part Face color	YES	
CAD Entity Color	Assembly Occurrence face color (set at assembly level)	NO	
CAD Entity Color	Assembly Occurrence part color (set at assembly level)	PARTIAL	- JT Specific: Assembly occurrence part color partially supported when using "Synchronize Subassembly Properties -> Display"
CAD Entity Color	Component Transparency/Opacity	NO	
CAD Entity Color	GDT Color	YES	
CAD Entity Color	Supplemental Geometry Color	PARTIAL	ANARK DOESN'T IMPORT DATUM PLANE COLOR
Product Metadata	Product Attributes (Custom Parameters, File Properties, etc)	YES	
Product Metadata	Semantic Attributes for GD&T	YES	
Supplemental Geometry	Datum Planes	YES	
Supplemental Geometry	Fixed Size Datum Planes	YES	
Supplemental Geometry	Axis Systems	YES	
Supplemental Geometry	Fixed Size Axis Systems	YES	
Supplemental Geometry	Dashed lines: axes, witness lines, etc	NO	
Supplemental Geometry	Supp Geometry Surfaces	YES	
GD&T	Flat to screen notes	YES	
GD&T	Graphical GD&T (3D dimensions, tolerances, notes, tables, weld symbols, etc)	YES	
GD&T	GD&T->Part Associations	NO	
GD&T	GD&T->Occurrence Associations	NO	
GD&T	GD&T->Face Associations	NO	
GD&T	GD&T->Occurrence Face Associations	NO	
GD&T	GD&T->FEATURE CONTROL FRAME/TOL Datum Reference Associations	NO	Implicit associations; user not required to define in CAD
GD&T	GD&T->Datum Associations	YES	
GD&T	GD&T->Supp Geometry Associations	NO	
GD&T	GD&T->Edge Associations	YES	
Views	Views	YES	
Views	Entity visibility; ability to hide/show various entities in a view or capture	YES	
Views	View Placement (ie. Exploded)	YES	
Views	Views with Folded and Flat Patterns (Supporting Sheet Metal)	NO	
Views	Views with Complex Sections	NO	
Views	View-Specific Bodies	NO	
Cross Sections	Cross Sections: Single Plane	YES	
Cross Sections	Cross Sections: 2 Plane (NX + JT Only)	NO	
Cross Sections	Cross Sections: Box (NX + JT Only)	NO	
Cross Sections	Cross Sections: Selective Sections	NO	
NX/JT Specific Supported Features			
NX	Merge Bodies	NO	
NX	Brep/precise or lightweight import options	YES	
Import / Output and Other Options			
Anark Collaborate	Importable to Anark Collaborate without Desktop publishing	NO	
Output Option	GD&T Show On Top	NO	
Import Options	Level Of Detail Settings	YES	
Import Options	Import Scope, GD&T	NO	
Import Options	Import Scope, Supplemental Geometry	YES	
Import Options	Ignore "Suppressed" Entities	NO	
Import Options	Combine Disjoint Bodies	NO	

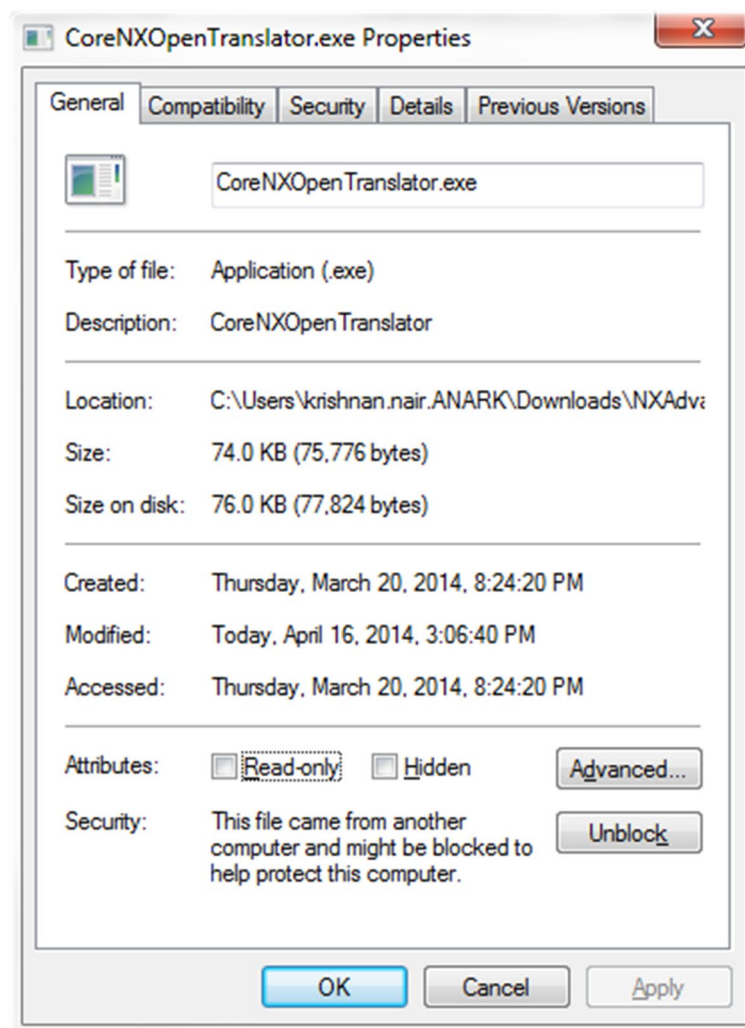


SECURITY

After **CoreNXOpenTranslator.exe** is extracted from the zip file, right click on the file, select Properties, and check whether there is a security warning (“This file came from another computer and might be blocked to help protect this computer”) as shown below. If there is a warning, click on the “Unblock” button.

This must be done at most once for each file and then the exe files can be copied to different machines.

If you do not perform this step, a translator which is built on .NET will not run as a full trust application and the import will fail. The warning is created by the built-in Windows zip extractor tool, so this might not be an issue if you use another tool to extract the zip file.



ANARK WORKSTATION INSTRUCTIONS

The Anark NX Adapter for Anark Workstation uses the NX Open API to translate NX files. Therefore, a working version of NX from one of the following released series: **NX2306 Series (NX2306.8900)**, **NX2312 Series (2312.9160)**, **NX2406 Series (NX2406.9100)**, **NX2412 Series (NX2412.8100)**, **NX2506 Series (NX2506.8300)**, **NX 2512 Series (2512.4000)** must be installed on the same machine as Anark Workstation to use the adapter. Also, NX Open libraries require .NET Framework 4.7.2 (if it is not installed on the computer, it can be obtained from the Microsoft download center <https://www.microsoft.com/en-us/download/details.aspx?id=49981>).

NX license features that are required to run the Anark NX Adapter include:

- “gateway”
- “solid_modeling”
- “geometric_tol”
- “assemblies”

To install the Anark NX Adapter for Anark Workstation:

1. Copy the file **CoreNXOpenTranslator.exe** to the folder where Anark Workstation is installed.
2. This step is required the first time that the Anark NX Adapter is installed, and it is not necessary to perform this step when upgrading. If the file, **NXAdvancedFormat.dll.config**, does not already exist in the **[Anark Workstation installation path] \Formats** folder, copy it from the ZIP into the **[*]\Formats** folder.
3. Verify the correct “NXBaseDirectory” is defined in the file, **NXAdvancedFormat.dll.config** (XML file) -- (which is located in the **[Anark Workstation installation path]\Formats** folder).

If NX has been installed in a folder which is different than what is between the <value> </value> portion of the config file, you need to modify the config file to match the path to where it is installed.

By default, the config file should look something like the following, where the light blue lettering is the portion which will potentially need to be modified:

```
<NXAdvancedFormat.Settings1>
  <setting name="NXBaseDirectory" serializeAs="String">
    <value>C:\Program Files\Siemens\NX 2312</value>
  </setting>
</NXAdvancedFormat.Settings1>
```

4. To load the NX file, select the “NX Advanced MBD” format from the Import file dialog before loading the file.



ANARK PUBLISH INSTRUCTIONS

The Anark NX Adapter for Anark Publish uses the NX Open API to translate NX files.

A working version of NX from one of the following released series **NX2306 Series (NX2306.8900)**, **NX2312 Series (2312.9160)**, **NX2406 Series (NX2406.9100)**, **NX2412 Series (NX2412.8100)**, **NX2506 Series (NX2506.8300)**, **NX2512 Series (NX2512.4000)** must be installed on the same machine as Anark Workstation to use the adapter. Also, NX Open libraries require .NET Framework 4.7.2 (if it is not installed on the computer, it can be obtained from the Microsoft download center <https://www.microsoft.com/en-us/download/details.aspx?id=49981>).

NX license features that are required to run the Anark NX Adapter include:

- “gateway”
- “solid_modeling”
- “geometric_tol”
- “assemblies”

To install the Anark NX Adapter for Anark Publish:

1. Copy the file **CoreNXOpenTranslator** to the folder **[Anark Publish installation path]\CadTransformerWebInterface\bin**.
2. This step is required the first time that the Anark NX Adapter is installed, and it is not necessary to perform this step when upgrading. If the file, **NXAdvancedFormat.dll.config**, does not already exist in the **[Anark Publish installation path]\CadTransformerWebInterface\bin\Formats** folder, copy it from the ZIP to the **[*]\CadTransformerWebInterface\bin\Formats** folder.
3. Verify that the correct “NXBaseDirectory” is defined in the file, **NXAdvancedFormat.dll.config** (XML file) -- (which is located in the **[*]\ [CadTransformerWebInterface]\bin\Formats** folder).

If NX has been installed in a folder which is different than what is between the <value> </value> portion of the config file, you need to modify the config file to match the path to where it is installed.

By default, the config file should look something like the following, where the light blue lettering is the portion which will potentially need to be modified:

```
<NXAdvancedFormat.Settings1>
  <setting name="NXBaseDirectory" serializeAs="String">
    <value>C:\Program Files\Siemens\NX 2312</value>
  </setting>
</NXAdvancedFormat.Settings1>
```

